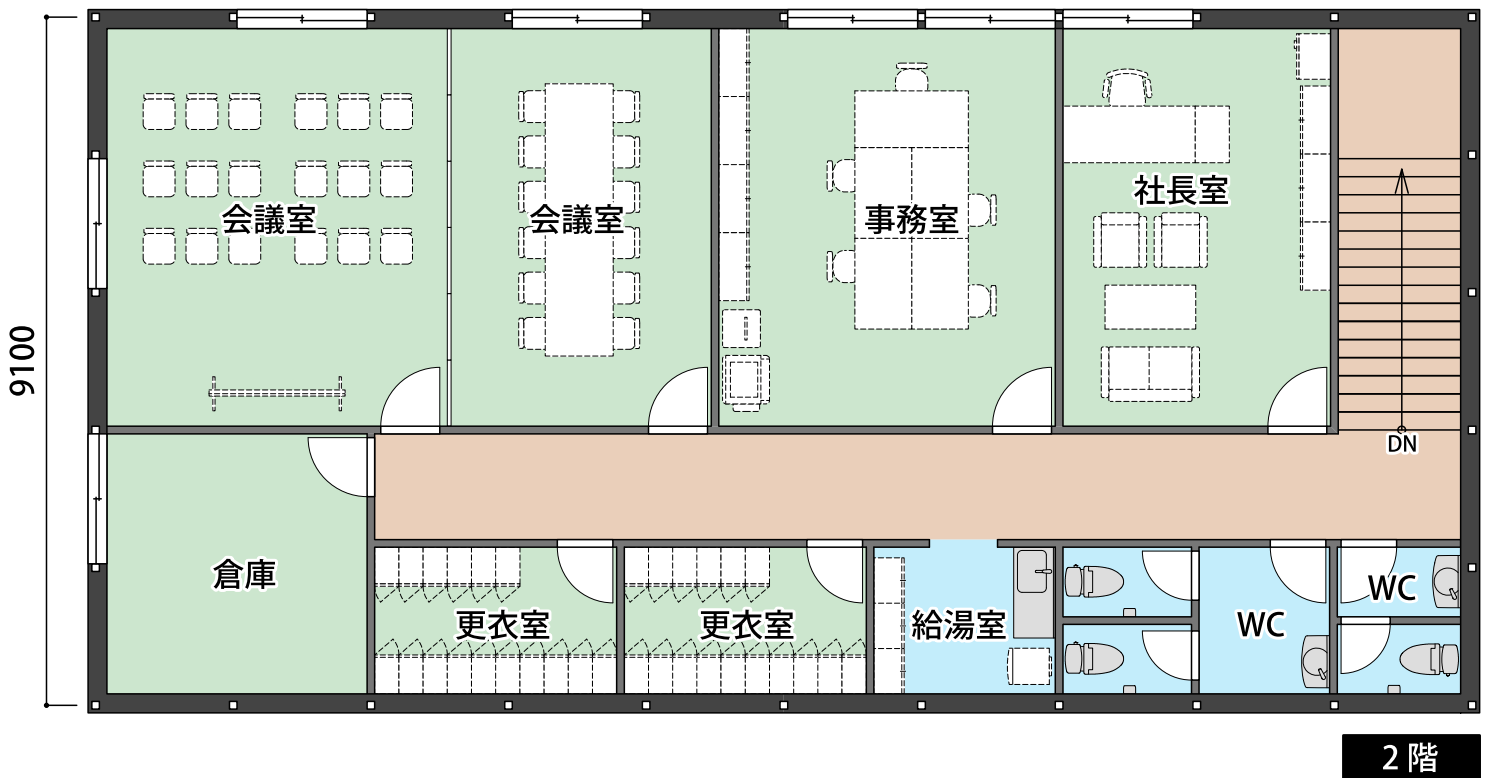
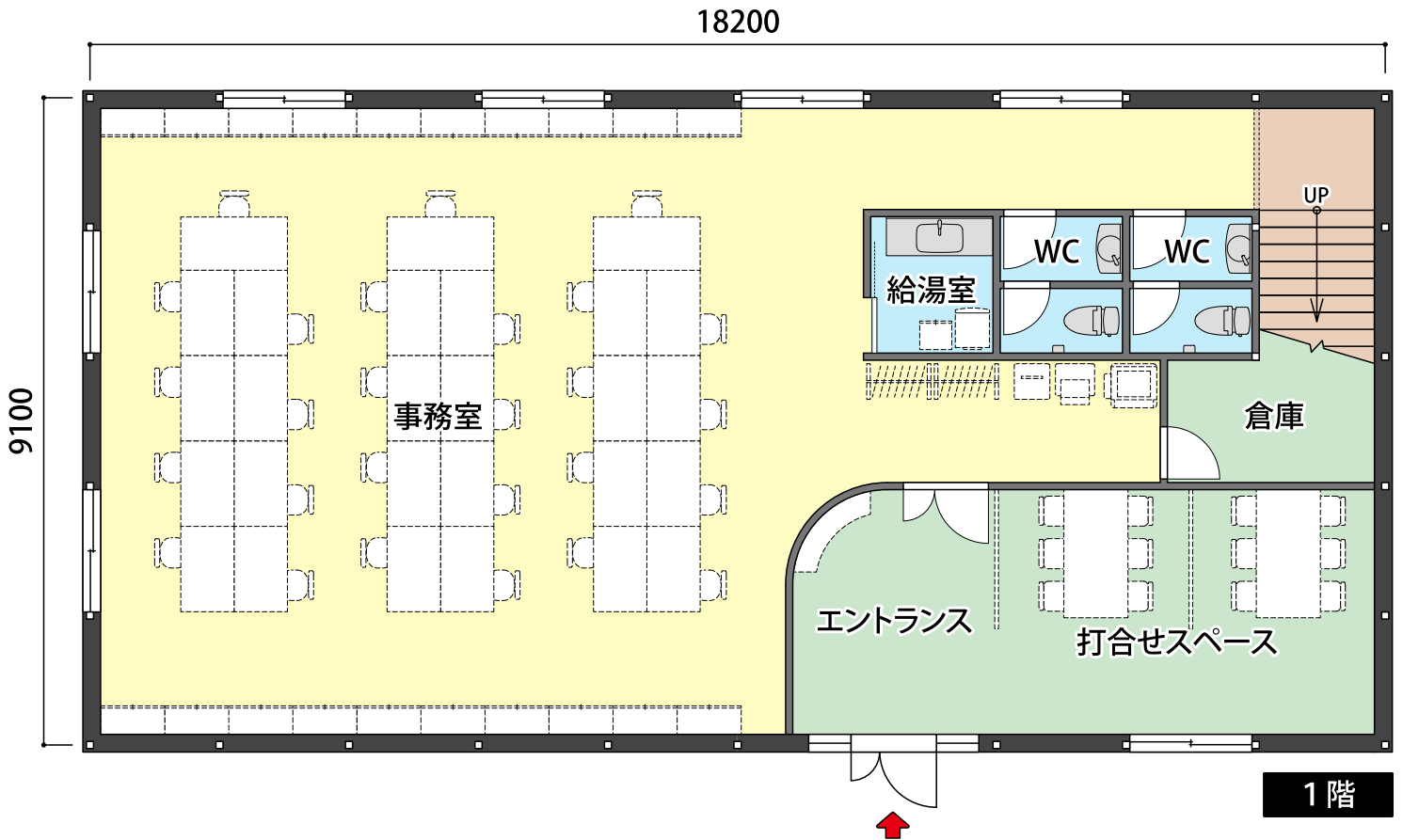


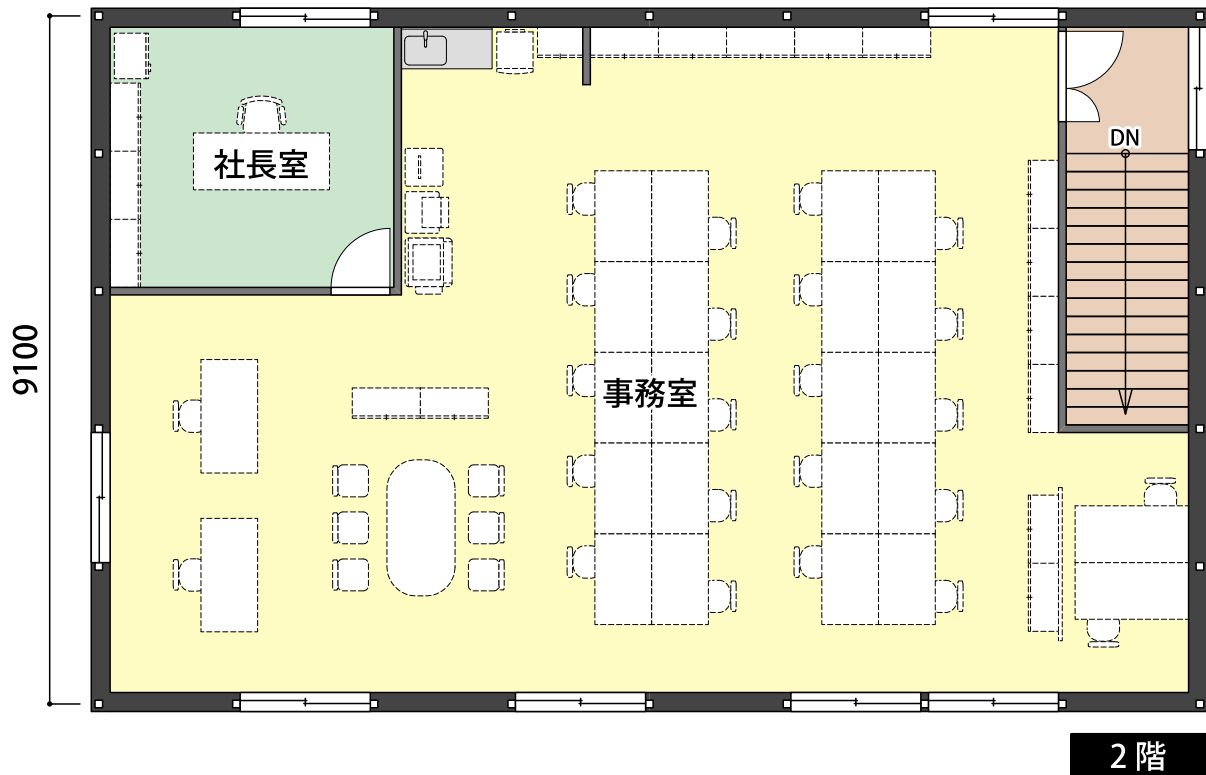
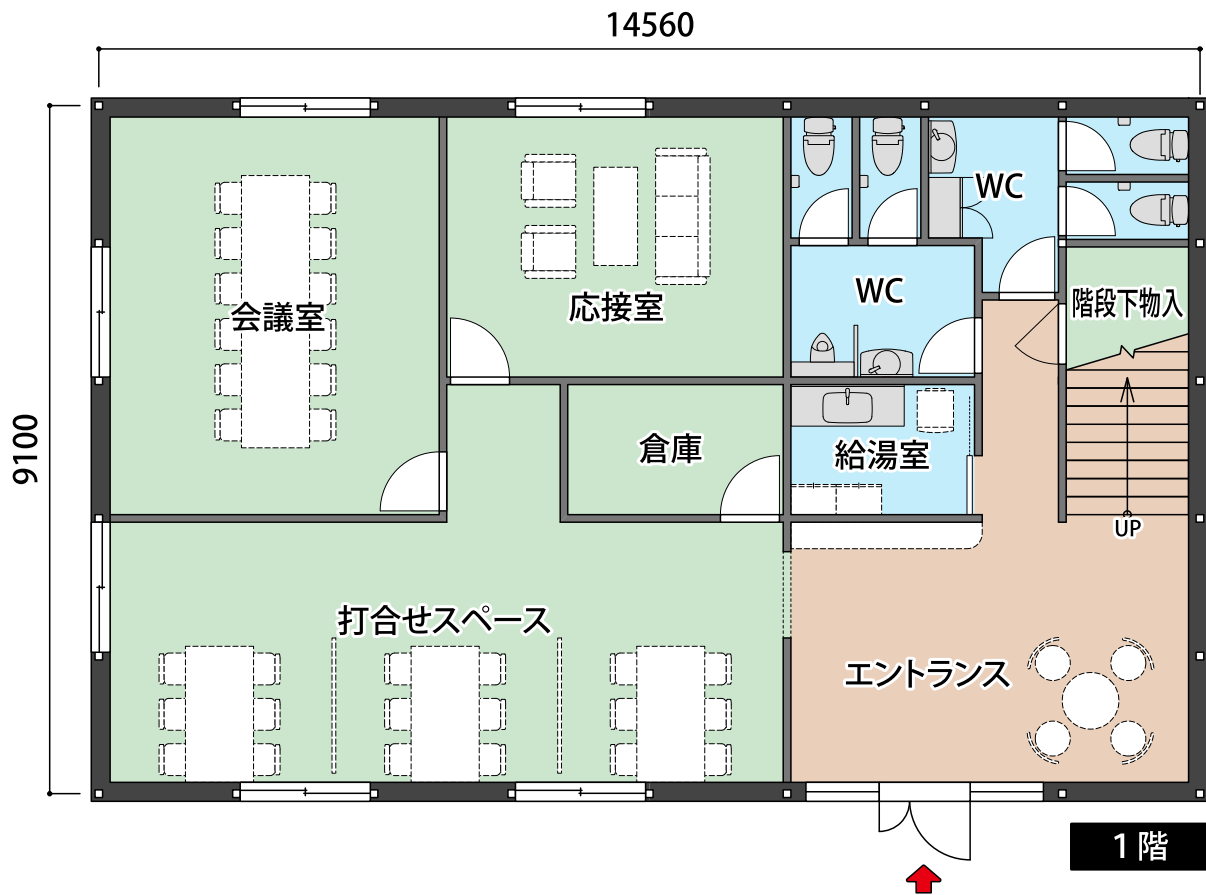
# 事務所

5間×10間×2階建 = 100坪



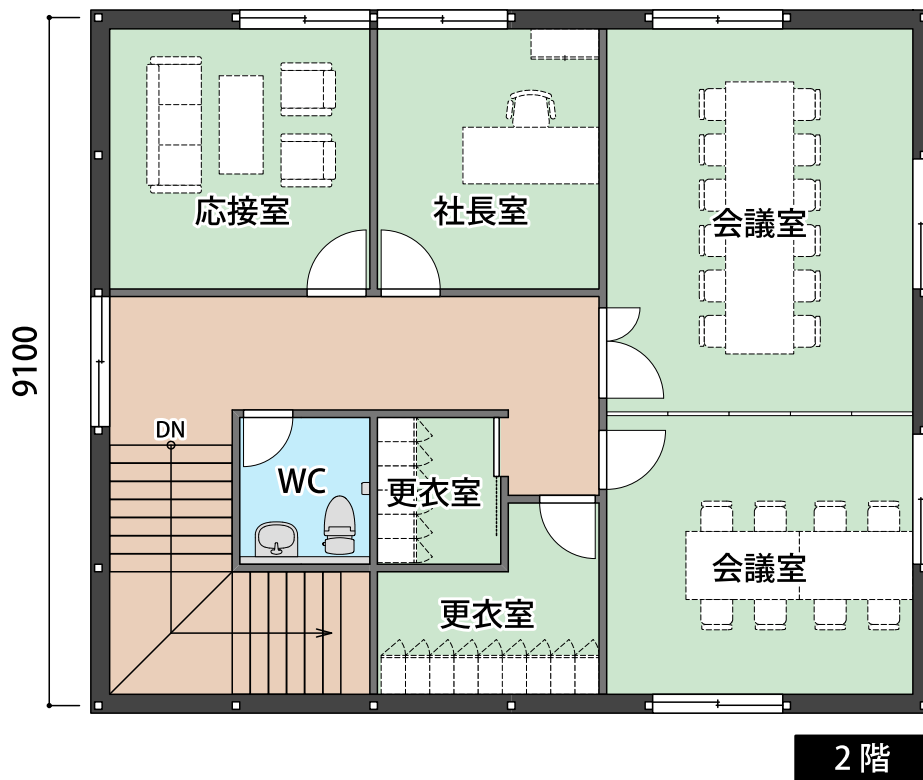
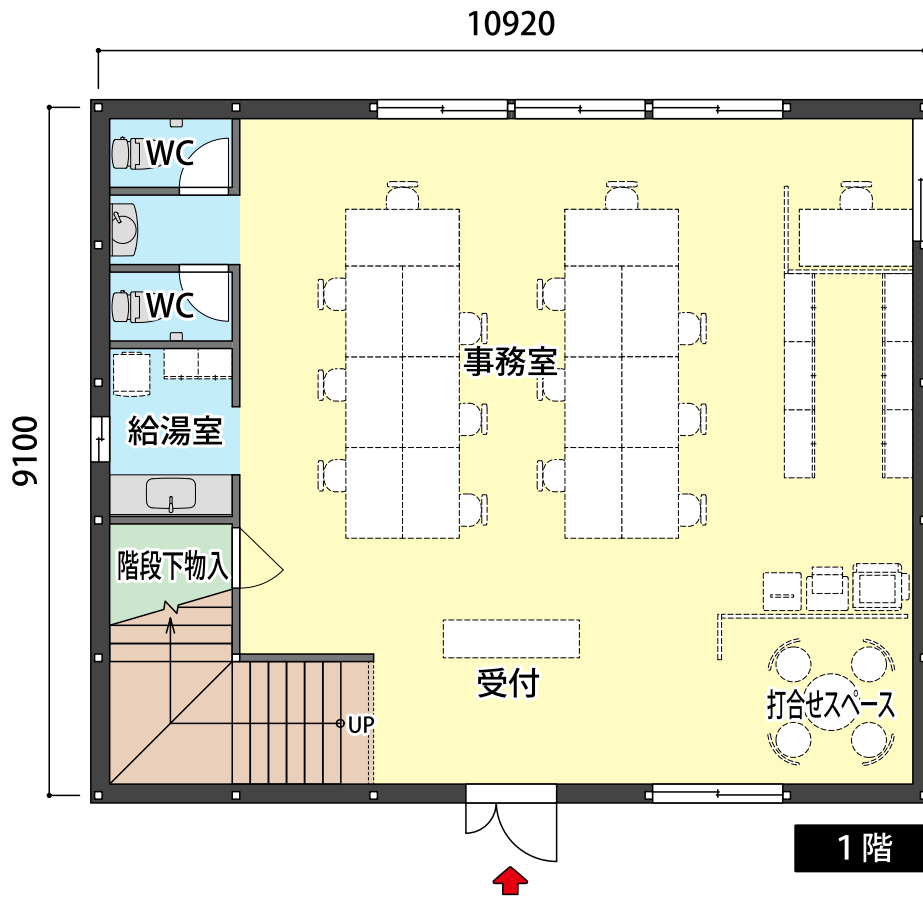
# 事務所

5間×8間×2階建 = 80坪



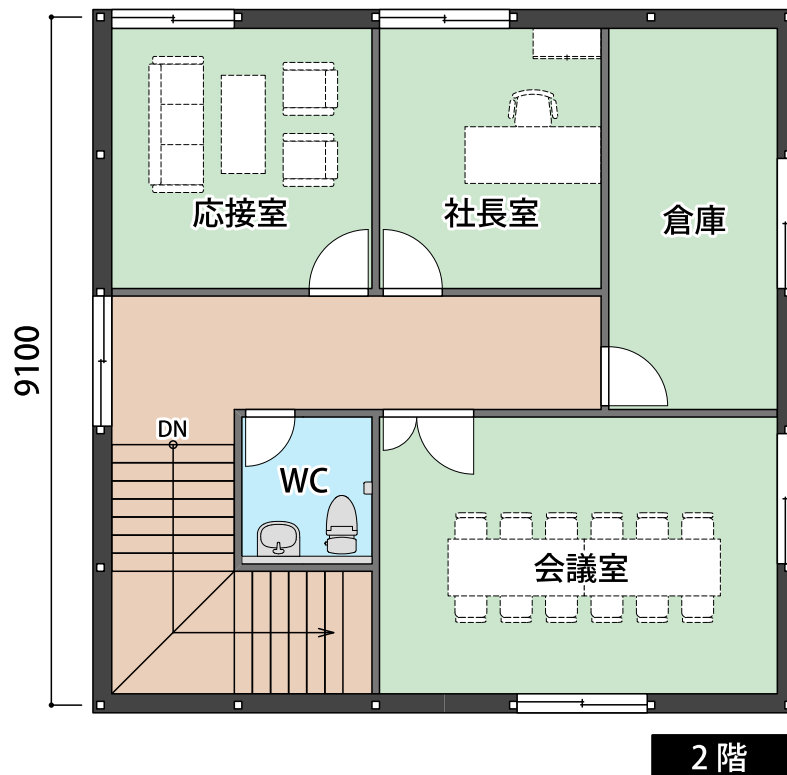
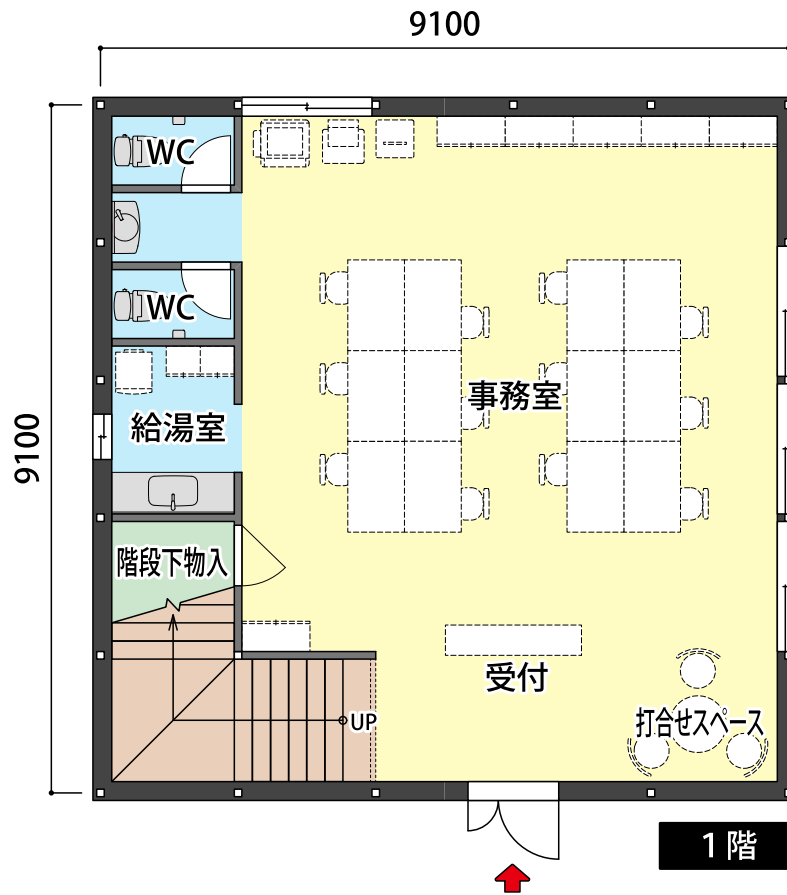
# 事務所

5間×6間×2階建 = 60坪



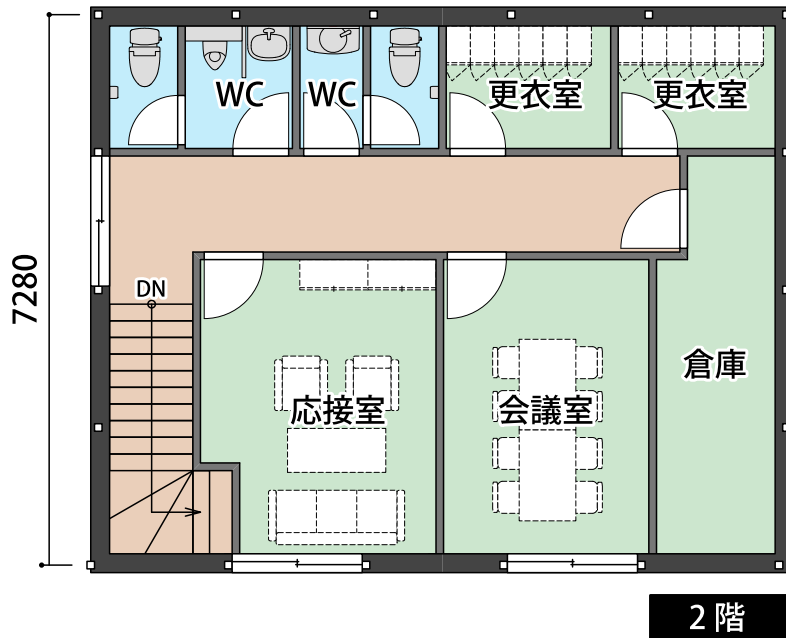
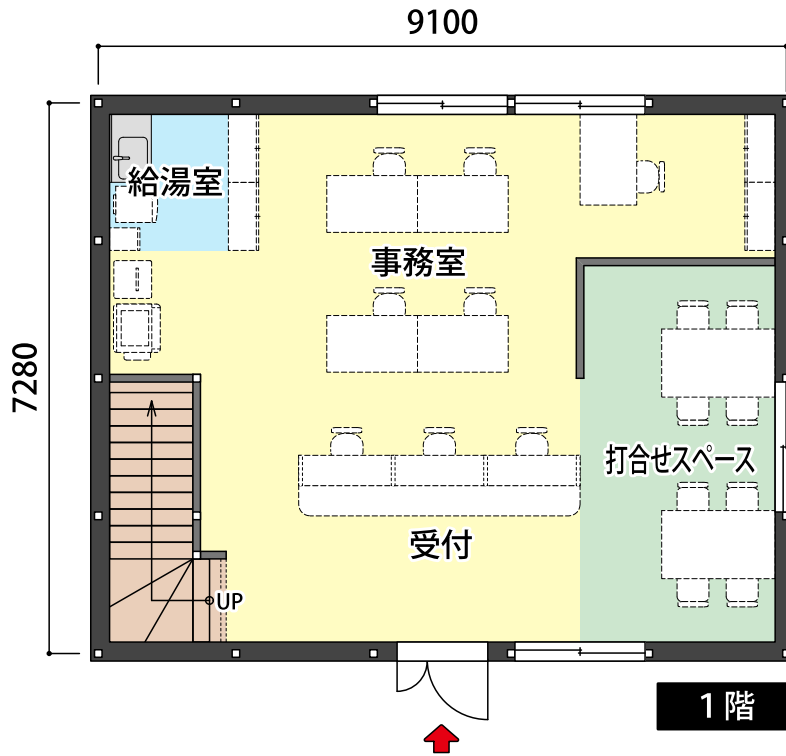
# 事務所

5間×5間×2階建 = 50坪



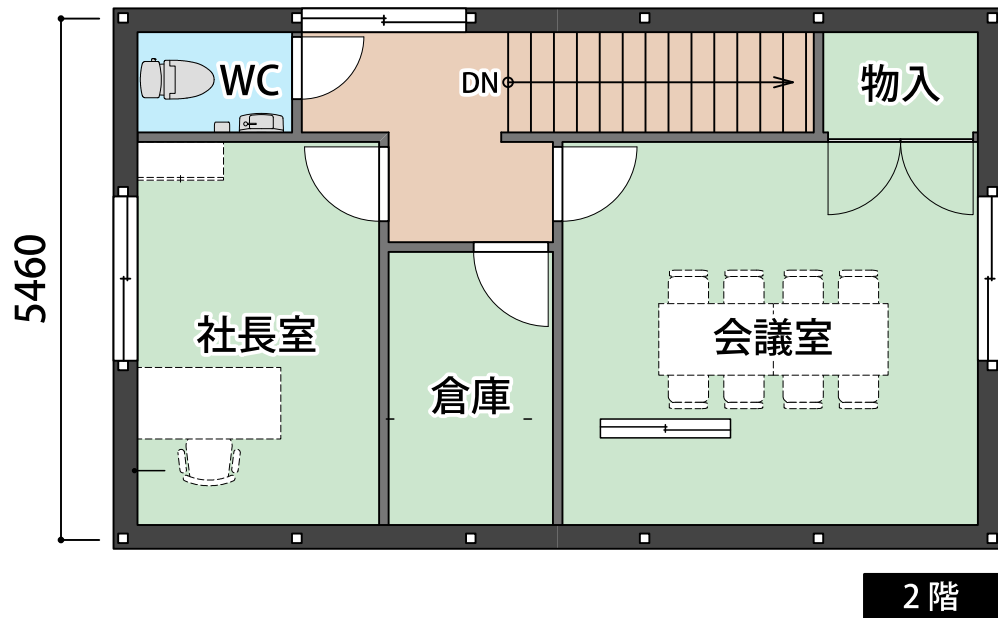
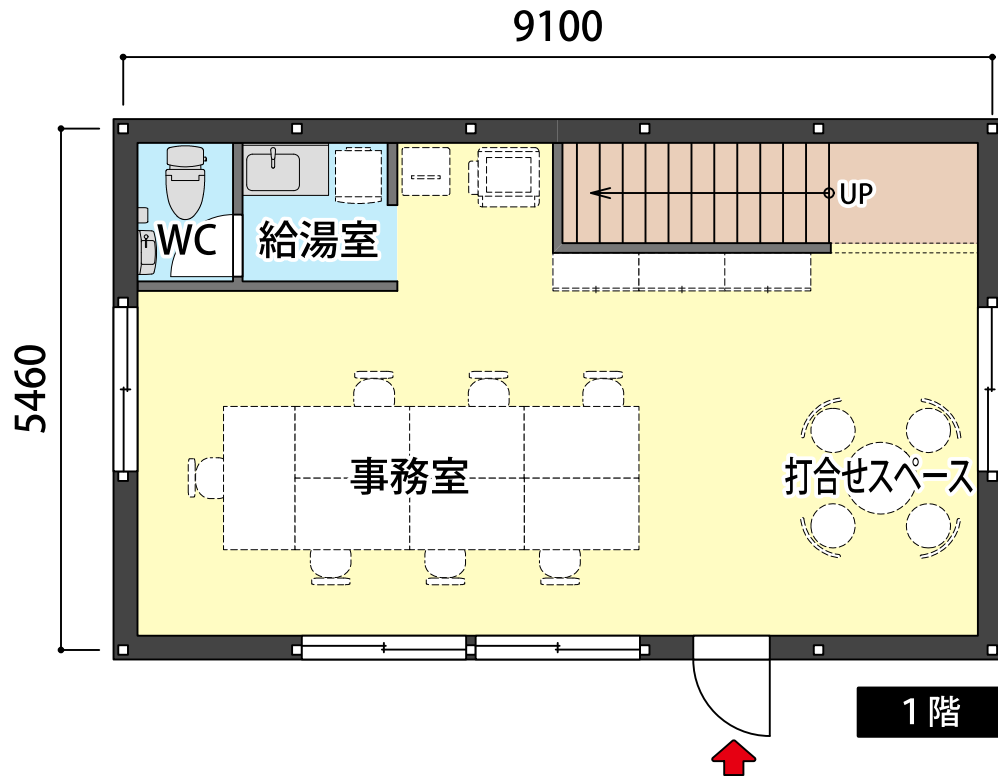
# 事務所

4間×5間×2階建 = 40坪



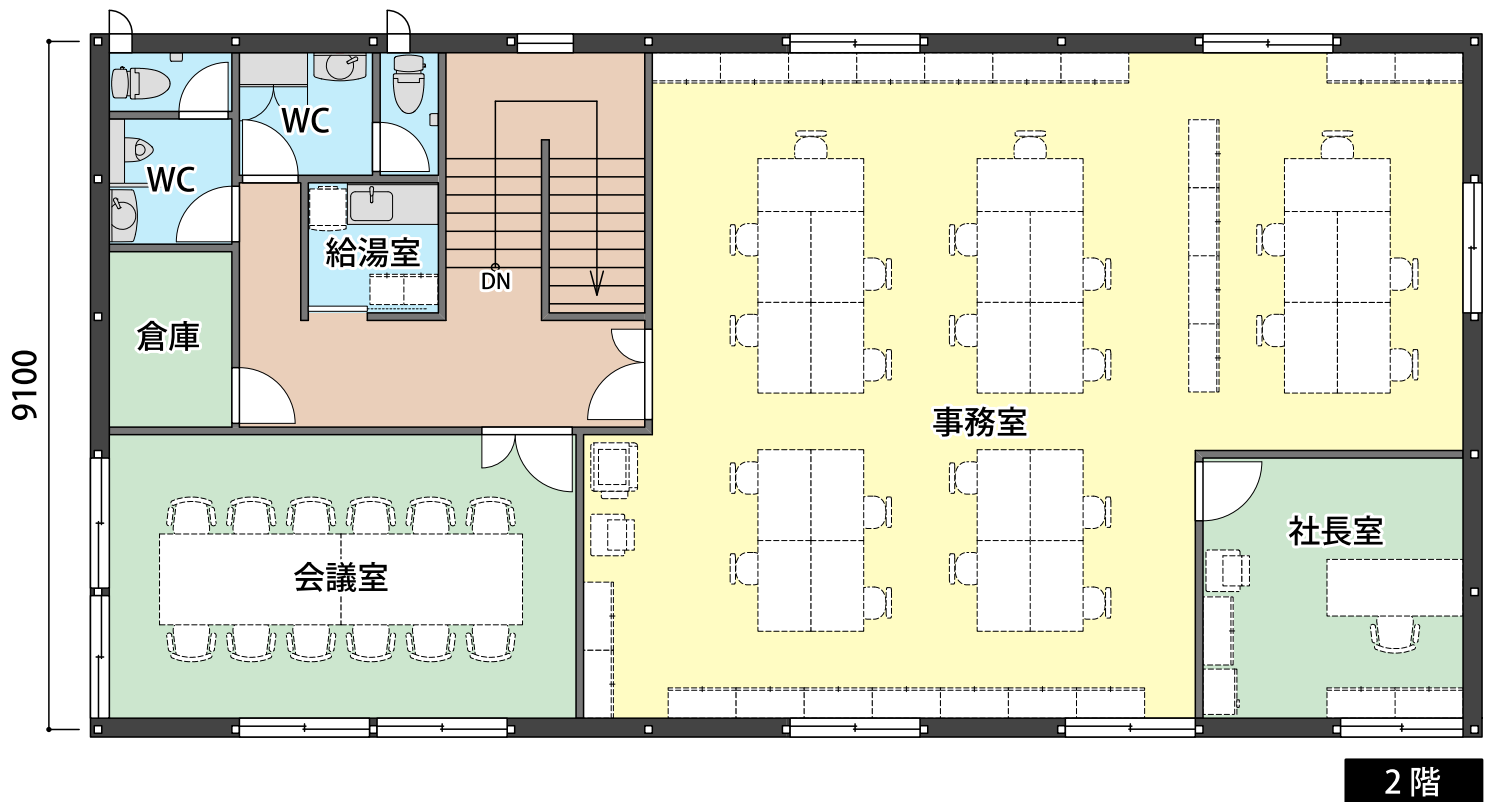
# 事務所

3間×5間×2階建 = 30坪



# 事務所 兼 倉庫

5間×10間×2階建 = 100坪



# 事務所 兼 倉庫

5間×6間×2階建 = 60坪

